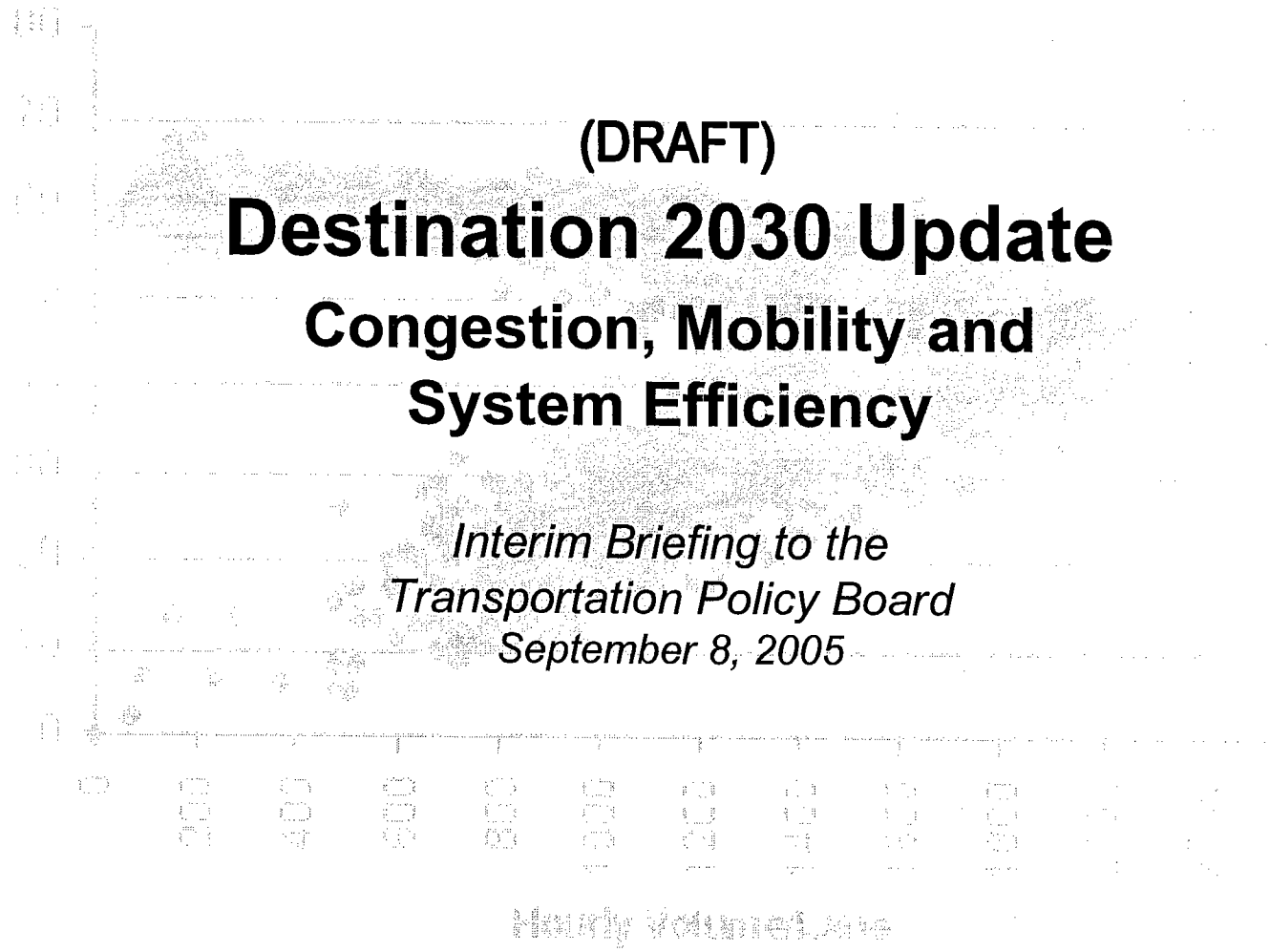


(DRAFT)

Destination 2030 Update

Congestion, Mobility and System Efficiency

*Interim Briefing to the
Transportation Policy Board
September 8, 2005*

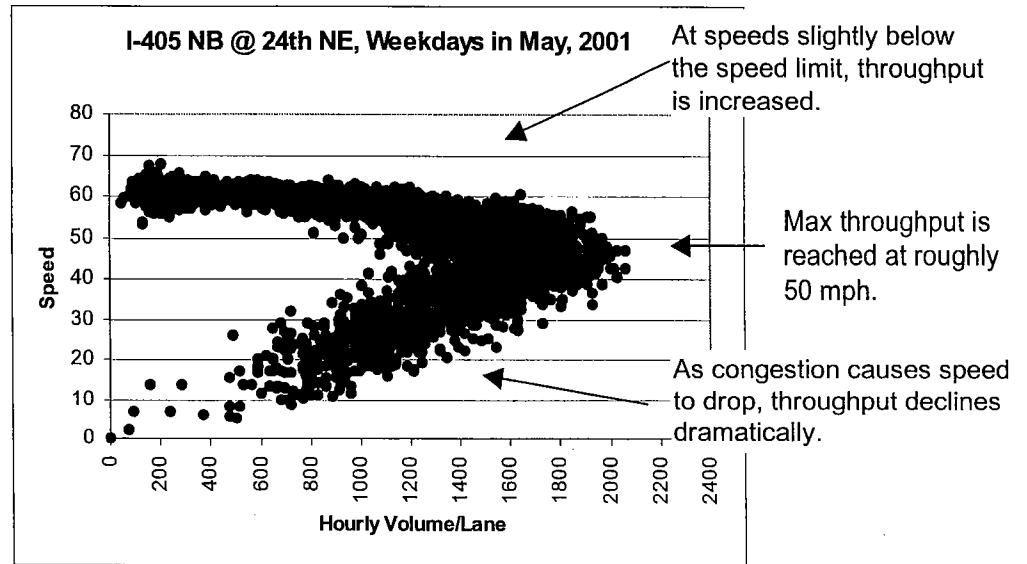


*This presentation is a draft and will be revised as needed.
last revised 9/6/05.*



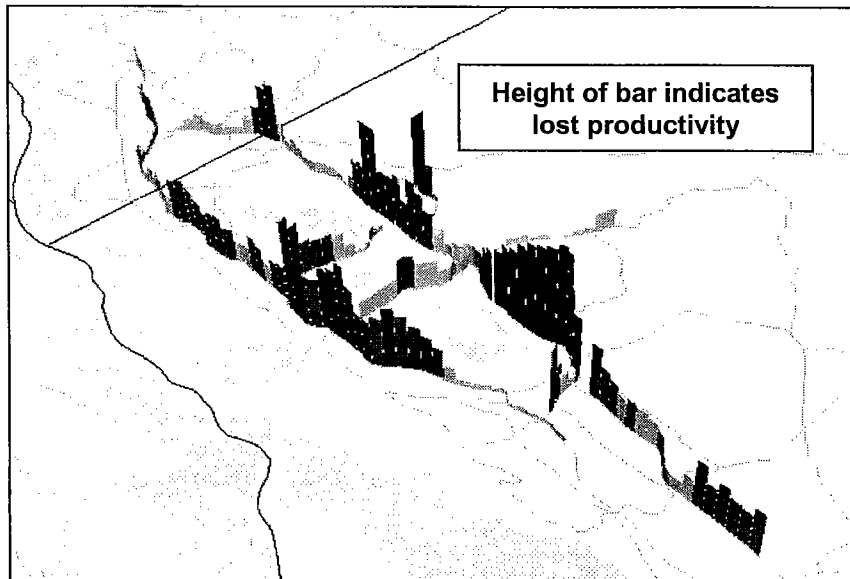
The Relationship Between Delay and Efficiency

Maximum freeway throughput is typically at speeds of 45-50 mph. This accommodates about 2000 vehicles per hour per lane. System throughput drops dramatically when traffic volume forces speeds to drop below 50 mph.



Volume and Speed Relationship

Lost Productivity on Puget Sound Freeways



- The highest spikes depicted on the map are located at the Interchange of I-5 and I-90 in Seattle, I-405 in Renton and Downtown Bellevue where up to 60% of the throughput is lost during the peak travel period.

- During the peak period on I-405, congestion reduces the throughput of the 2 general purpose lanes in Renton to the capacity of one free-flowing lane

Source: WSDOT

Regional Commute Patterns

AM Auto Person Trips To, From, & Within Sub areas

AM Transit Person Trips To, From, & Within Sub areas

