



District Projects in King County

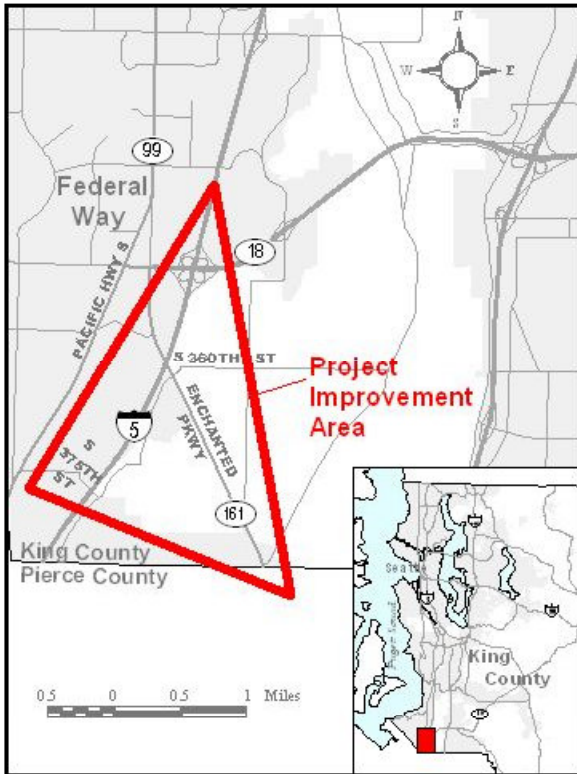
“I-5, SR-18 & SR-161 Triangle Interchange” in Federal Way

Project Description

Lead Agency: WSDOT

This project will improve the I-5/ SR-18/SR 161 interchange. The environmental process which will determine the exact scope of the project is now underway. This estimate is based upon a Design Study completed in early 2003. It includes construction of a direct westbound to southbound freeway to freeway ramp connection, construction of a frontage road on the west side of the interchange connecting directly to SR 161, and construction of a direct southbound I-5 to eastbound SR 18 freeway to freeway ramp connection.

Location



Schedule*

Phase	Year
Design & RW	2003-2010
Construction.....	2010-2011

Funding

Source	Y.O.E. \$	2004 \$
District	\$100,000	\$87,479
State	\$3,000	\$2,976
Total	\$103,000	\$90,456

(All Funding Dollars in Thousands)
(Y.O.E. = Year of Expenditure Dollars)

*Based on Nov 04 ballot measure

Performance

The primary benefit of this project is the replacement of the current substandard loop-ramp interchange with an improved I-5/SR-18 interchange that provides direct freeway-to-freeway connections. This project will improve traffic-flow and safety on the I-5 freeway mainline. It will provide for free flow of traffic between I-5 and SR-161 in both directions via frontage roads. Project environmental mitigation measures could result in the restoration of the Hylebos Creek, new wetland creation and the installation of current stormwater detention and water-quality treatment facilities.

Approximately 95,000 vehicles are projected to use the I-5 / SR-18 interchange in the year 2020. This project will eliminate weaving conflicts for 44,000 of those vehicles. The 2020 projections also indicate that there will be a 30% increase in speed for vehicles on the I-5 ramps if the existing weaves are eliminated. The elimination of these weaves will also result in a 50% reduction in traffic density on the I-5 ramps.

What New Funding Will Achieve

- New funding will provide the construction of direct freeway-to-freeway connections via flyover connections and freeway frontage roads.
- Elimination of major safety deficiencies (HAL/HAC) on the I-5 mainline and at the I-5/SR-18 interchange.
- Elimination of substandard clover-leaf freeway ramps and conflicting merge/diverge traffic movements.
- Improvements to local surface arterials in the form of congestion relief and improved safety.
- Improved and safer access to local commercial entities, regional activity centers and residential areas in Federal Way.
- Environmental mitigation may include improvements to the upper Hylebos Creek. Stormwater detention and treatment of on-site stormwater runoff.